

THE POSSIBILITIES ARE INFINITE

**FUJITSU**

---

**WebTransactions** Connection to  
**openFT for file transfer**

---

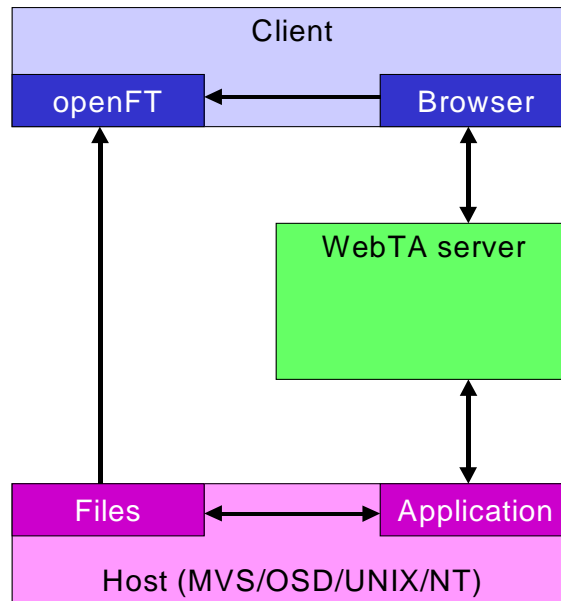
## Contents

<b>1</b>	<b><i>Introduction</i></b>	<b>3</b>
<b>2</b>	<b><i>Client configuration</i></b>	<b>4</b>
<b>3</b>	<b><i>WebTransactions templates</i></b>	<b>5</b>

## 1 Introduction

In order to transfer files created during a WebTransactions session on the host, you can initiate a direct file transfer operation with openFT via a browser. The mechanism provided by openFT can be very easily controlled from WebTransactions. For this purpose, openFT must be installed on the client system. This interface can be used for all WebTransactions platforms and protocols.

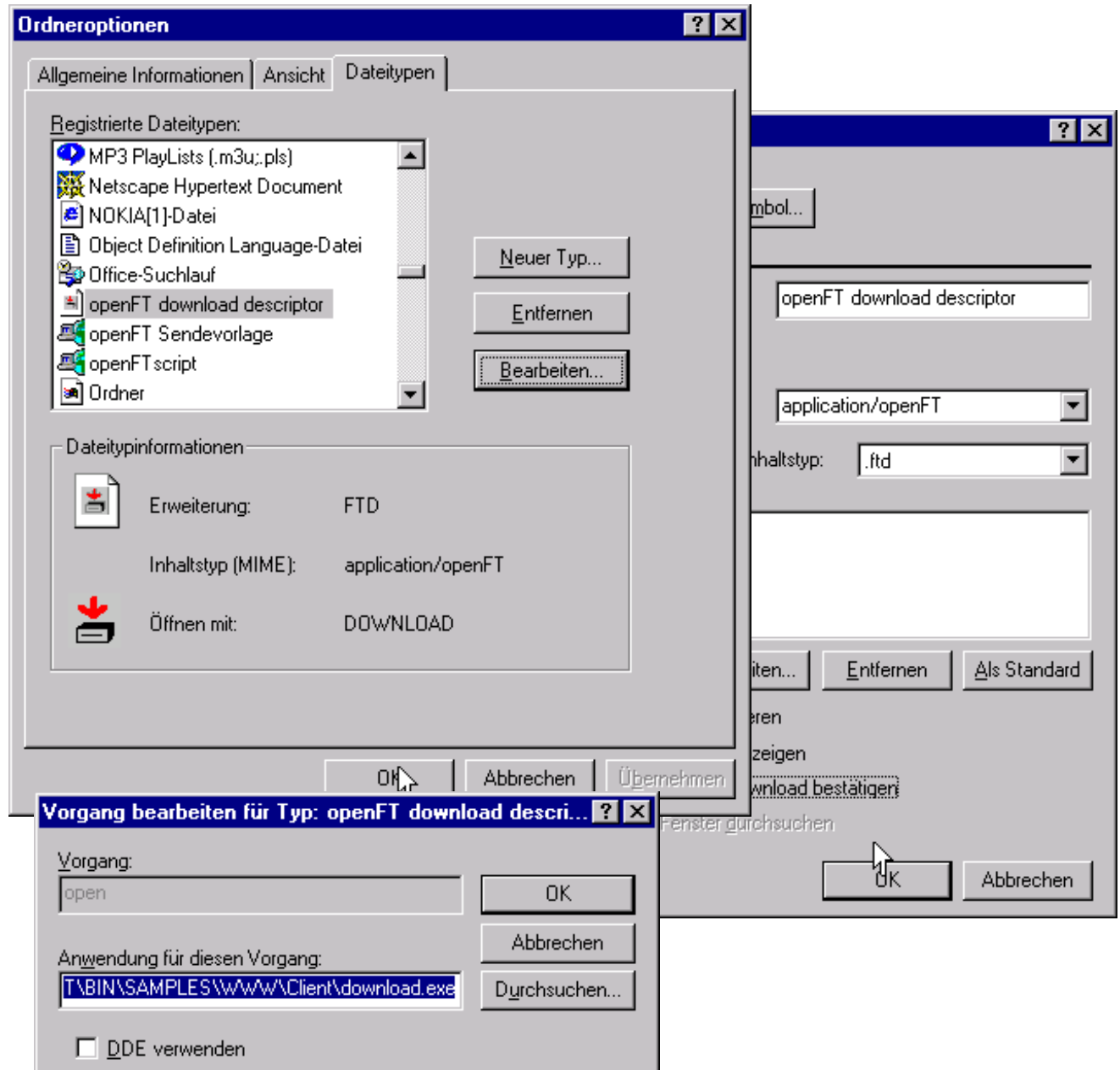
The openFT installation directory contains a subdirectory *BIN\SAMPLES\WWW* with a description of the WWW interface. The defined functionality on the server can also be implemented using WebTransactions templates. The auxiliary application *download.exe* can be used as described.



## 2 Client configuration

The procedure described below applies both for Netscape Navigator and for Internet Explorer Version 4 or later.

A new file type "*openFT download descriptor*" must be configured (by choosing View/Folder Options in the Explorer). The necessary settings are shown in the figure below. **It is crucial that you set the correct MIME type.**



### 3 WebTransactions templates

These are two sample templates, which define how openFT is called in WebTransactions. These templates can also be found in the PackAndGo archive *openFTDemo.zip*

#### startft.htm

```
<html>
  <head>
    <title>WebTransactions - openFT Connect</title>
  </head>
  <body>
    <Form WebTransactions AsyncPage="callft">
      <H2>Please enter parameters for openFT:</h2>
      <pre>
Partner System:      <input type=text name=partner>
Transfer Admission: <input type=password maxlength=8 size=8
name=transadm>
File Name:           <input type=text name=file>
Mode:                <select name=mode><option
value="Sync">Synchronous</option><option
value="Async">Asynchronous</option></select>
Options              <input type=text name=option>

      <input type=submit name=getit value="Transfer File">
      </pre>
    </Form>
    <H2>Alternative: Call file directly via a link:</h2>
    File Download:
      <a href="##WT_SYSTEM.HREF_ASYNC#&\
WT_ASYNC_PAGE=callft&partner=anyhost.anydomain&transadm=myftadm&\
file=XXX.YYY&mode=Async&option=-b">
        XXX.YYY
      </a>
    </body>
</html>
```

The `startft.htm` template can be used as a start template for WebTransactions and generates the following web page:

**Bitte Parameter für openFT eingeben:**

Partnerrechner:

Transfer Admission:

Dateiname:

Modus:

Optionen

**Alternative: Direkter Aufruf für eine Datei über Link:**

Dateidownload: [XXX.YYY](#)

Here, you can enter parameters for the file transfer process or use the link to download a file.

The following template `callft.htm` is always addressed, and is used to initiate the file transfer to the client on the basis of the inputs for the `download.exe` call:

#### callft.htm

```
<wtOnCreateScript>
<!--
WT_SYSTEM.HTTP_HEADER = "Content-type: application/openFT\n\n";
/-->
</wtOnCreateScript>
Partner=##WT_POSTED.partner#&\
File=##WT_POSTED.file#&\
TransAdm=##WT_POSTED.transadm#&\
Mode=##WT_POSTED.mode#&\
Option=##WT_POSTED.option#&&
```

`WT_SYSTEM.HTTP_HEADER` can be used to define the MIME type of the page currently generated. As soon as it receives this page, the browser automatically launches the `download.exe` program. A file dialog is then opened in which you enter the name of the file on the client PC. The specified file is then transferred.